

GIS & Information Management Services

About

ABPmer offers a wide range of Geographic Information System (GIS) and Information Management services ranging from data capture to the development of tailor-made GIS software solutions and databases

Projects within the marine environment often pose unique challenges, ABPmer's dedicated team of GIS professionals have developed a series of tools and techniques that resolve complex data analysis and information presentation issues. Staff expertise includes programming, customisation, development, data acquisition, metadata management, advanced spatial analysis and information presentation.

The team at ABPmer utilises structured project management systems and high-end spatial database technology for the management of datasets. A broad range of leading industry software, including ESRI ArcGIS (including 3D and Spatial Analyst extensions), ArcSDE, ArcIMS and ArcGIS Server, MapInfo, ERDAS and CadCorp, is used for the management and presentation of data providing solutions that are well aligned to client requirements

Areas of Application

ABPmer has a detailed understanding of spatial analysis techniques and provides tools for:

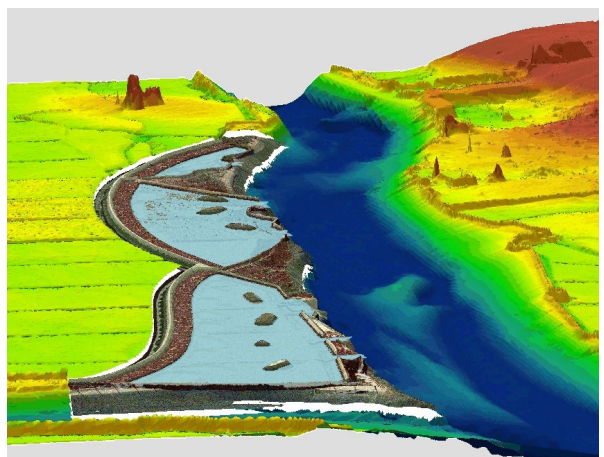
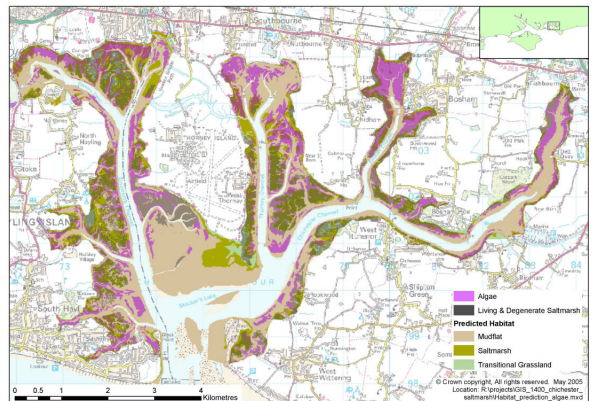
- Channel migration analysis
- Constraint mapping
- Deployment optimisation
- Intertidal habitat prediction
- Marine Spatial Planning
- Planning optimum service routes
- Resource quantification
- Seabed and system evolution
- Site selection
- Vertical datum correction
- Volumetric analysis
- WebGIS & Dissemination

Specialist Services

3D Visualisations - Groundbreaking photorealistic 3D GIS visualisations can be produced for the analysis and dissemination information to a wide audience. These products provide powerful tools able to describe the features and processes within a proposed area of development or demonstrate change. Visualisations can also incorporate outputs from other ABPmer areas of expertise including: Coastal Processes, Numerical Modelling and Environmental Analysis.

Customised GIS Development - ABPmer GIS customisations range from the programming of individual analysis tools to the complex integration of GIS with numerical modelling and database applications. Access to a variety of development environments enables ABPmer to offer solutions for a wide range of data analysis and information presentation issues.

WebGIS and Dissemination - ABPmer has industry leading Internet mapping software which has been developed to provide a data and information map portal. With this technology ABPmer staff are able to address a wide range of contemporary issues including dissemination of data and metadata, presentation of project deliverables and development of real-time GIS for the rapid display and analysis of spatial information



Further Information

Please phone Claire Brown, ABPmer : 02380 711840

